

# Cementation guide: Glass ceramic restorations made with chairside CAD/CAM systems

Whether you're using modern ceramic materials or a minimally invasive technique, you have high expectations for your dental cements, especially when it comes to esthetics and bond strength. At 3M Oral Care, we are constantly striving to bring you enhanced performance. Our advanced adhesive resin cements deliver highly esthetic results and high bond strength, while simplifying your procedure with fewer necessary steps.






**3M™ RelyX™ Unicem 2**  
Self-Adhesive Resin Cement

**3M™ RelyX™ Ultimate**  
Adhesive Resin Cement

+

**3M™ Scotchbond™**  
Universal Adhesive



<b>Crowns</b> 	<b>++</b>	<b>++</b>
<b>Inlays/Onlays</b> 	<b>+</b>	<b>++</b>
<b>Veneers*</b> 		<b>+</b>

**++ Highly recommended\*\***

**+ Recommended**

\*Alternatively, if the veneer is not too thick and light can sufficiently penetrate the restoration, 3M™ RelyX™ Veneer Cement, a light-cure only cement, may be used if additional working time is required.

\*\*Either better performance for this indication or easier handling with equal performance.

# Two Simple Procedures for Esthetic Results

## Crowns:

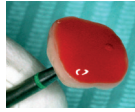
Cementation procedure with 3M™ RelyX™ Unicem 2 Self-Adhesive Resin Cement\*

### Tooth Pre-treatment:

- 1
  - Mechanically clean, e.g., with pumice slurry
  - Avoid chemicals like H<sub>2</sub>O<sub>2</sub> and EDTA that impair the bonding process
  - No additional primer or bonding agent is required

### Restoration Pre-treatment:

- 2 Etching with hydrofluoric acid



- 3 Apply silane: 3M™ RelyX™ Ceramic Primer



### Seating:

- 4 3M™ RelyX™ Unicem 2 Self-Adhesive Resin Cement



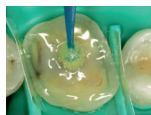
\* For full instructions, please refer to the appropriate Instructions for Use or step-by-step guides.

## All Restorations:

Cementation procedure with 3M™ RelyX™ Ultimate Adhesive Resin Cement\*

### Tooth Pre-treatment:

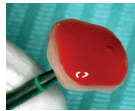
- 1 Clean tooth and pre-treat with 3M™ Scotchbond™ Universal Adhesive according to Instructions for Use.



For total-etch, self-etch and selective-etch techniques

### Restoration Pre-treatment:

- 2 Etching with hydrofluoric acid



- 3 3M™ Scotchbond™ Universal Adhesive



Apply as a silane according to instructions.

### Seating:

- 4 3M™ RelyX™ Ultimate Adhesive Resin Cement



\* For full instructions, please refer to the appropriate Instructions for Use or step-by-step guides.

## Tips for a Successful Procedure

### Tip 1:

Should you experience bleeding, use 3M™ Retraction Capsule for a lasting and robust hemostasis. Or, treat gums with 3M™ Peridex™ Chlorhexidine Gluconate 0.12% Oral Rinse prior to tooth treatment and restoration procedures.



### Tip 2:

For an easy tack cure before cement cleanup, use an 3M™ Elipar™ DeepCure-S LED Curing Light. It features a tack-cure button for controlled timing.



[www.3m.com/dentalcements](http://www.3m.com/dentalcements)



3M Oral Care  
2510 Conway Avenue  
St. Paul, MN 55144-1000 USA

Phone 1-800-634-2249  
Web [3m.com/dental](http://3m.com/dental)

3M Canada  
Post Office Box 5757  
London, Ontario N6A 4T1  
Canada

Phone 1-888-363-3685

3M, Elipar, Peridex, RelyX and Scotchbond are trademarks of 3M or 3M Deutschland GmbH. Used under license in Canada. Printed in USA. © 3M 2017. (Rev. 5/2017) All rights reserved. 70-2013-0707-4